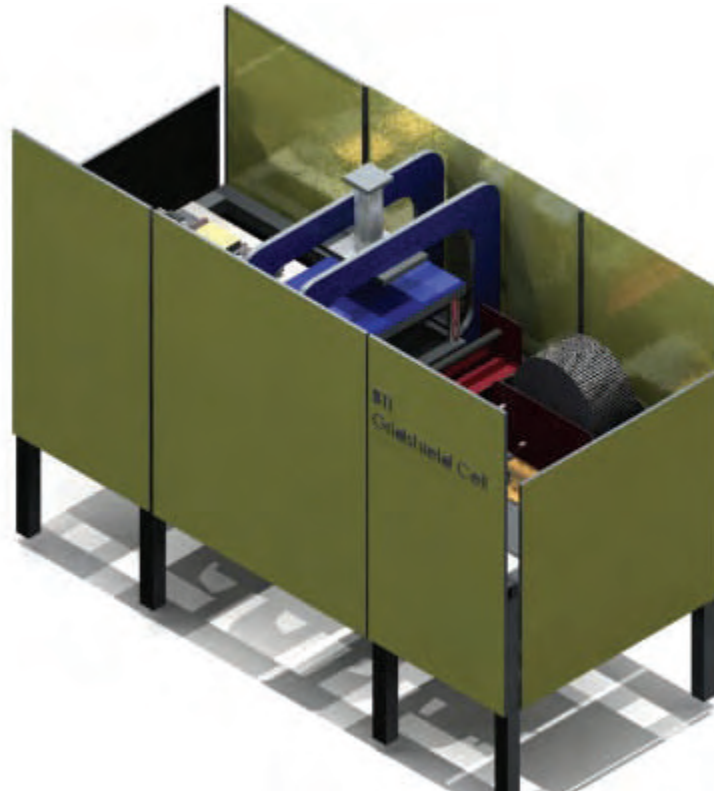


## BTI Cell unit Model B



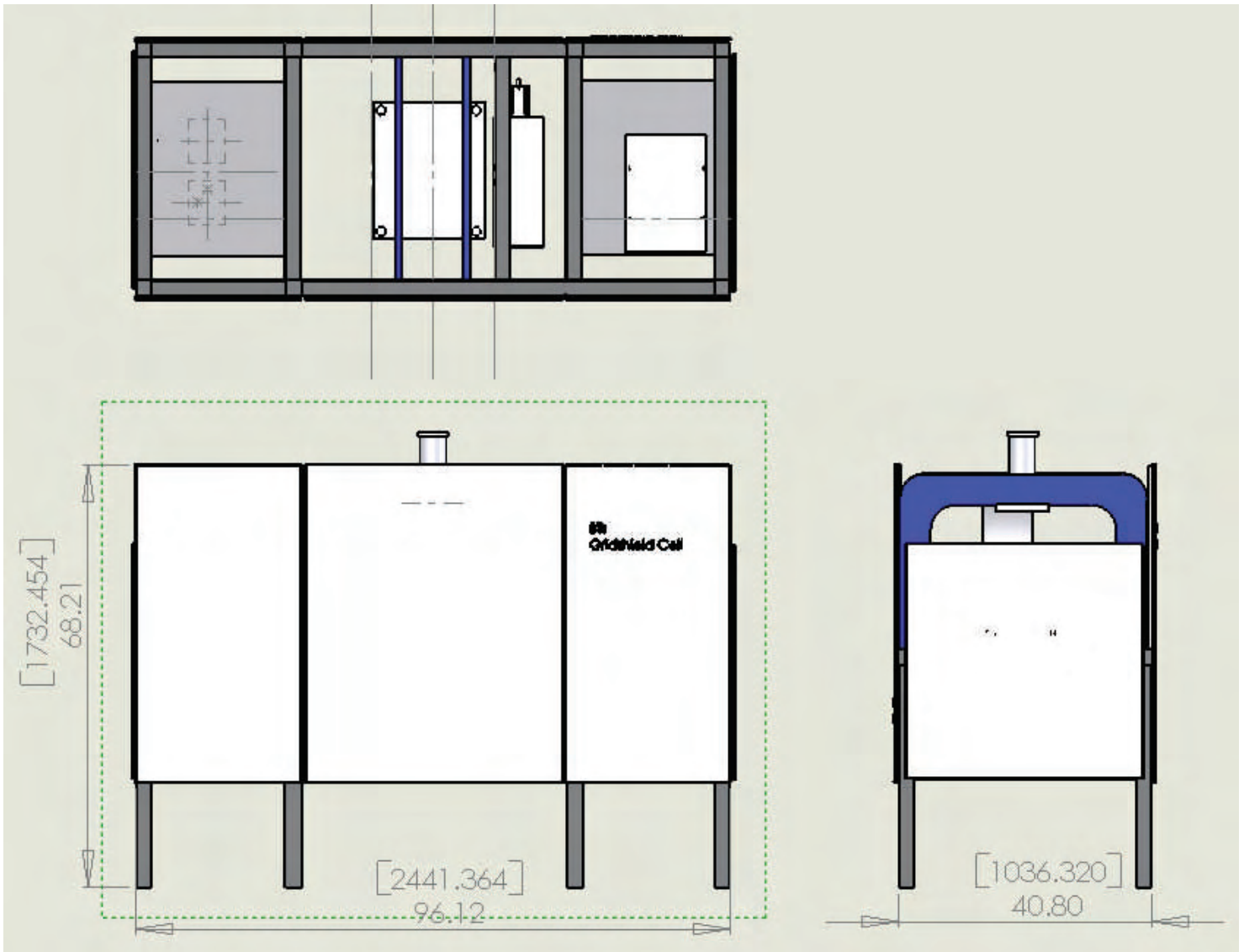
### Gridshield Cell unit:

Small and compact , complete system fits right beside your molding machine. Produces a formed mesh for inserting into your mold to produce your shielded enclosure right out of the Press.

The unit can keep up with a molding cycle of 15 seconds.

Meet all of your customers EMC requirements without using an outside source. Mold your complete shielded parts and ship— no delays for coating , quality or added cost.

We also offer full product design consulting to solve your products shielding requirements.



Max Part Size 7" x 6" x 5"

\*Requires 110V & 90 PSI air

Stand Unit Includes:

Easy Load Mesh station

Mesh Storage

Stamping Station

Forming Station

LCD Monitor/Sensor System

Air Filter

Lock Out

Total Cell Weight 1,800 lbs.

2441 mm X 40.80 mm x 1732.45 mm

#### Optional Equipment

Sheet metal enclosure  
(Shown)

Large Color Monitor w /  
windows programming .

\*Power & Air can be adjusted to meet customer standards.